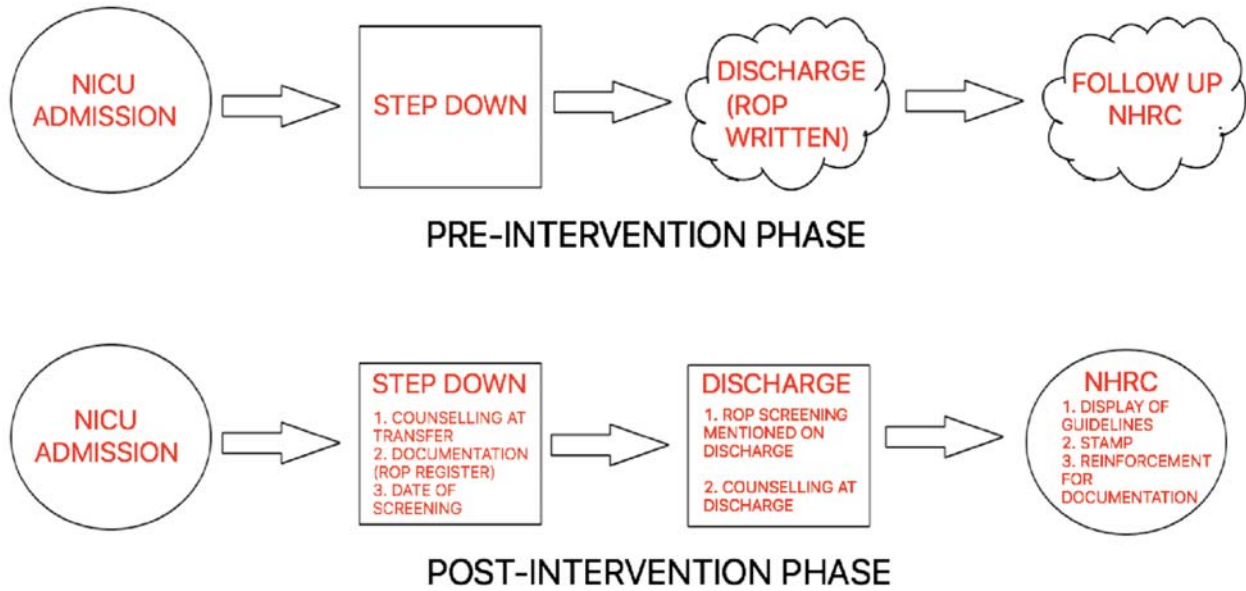
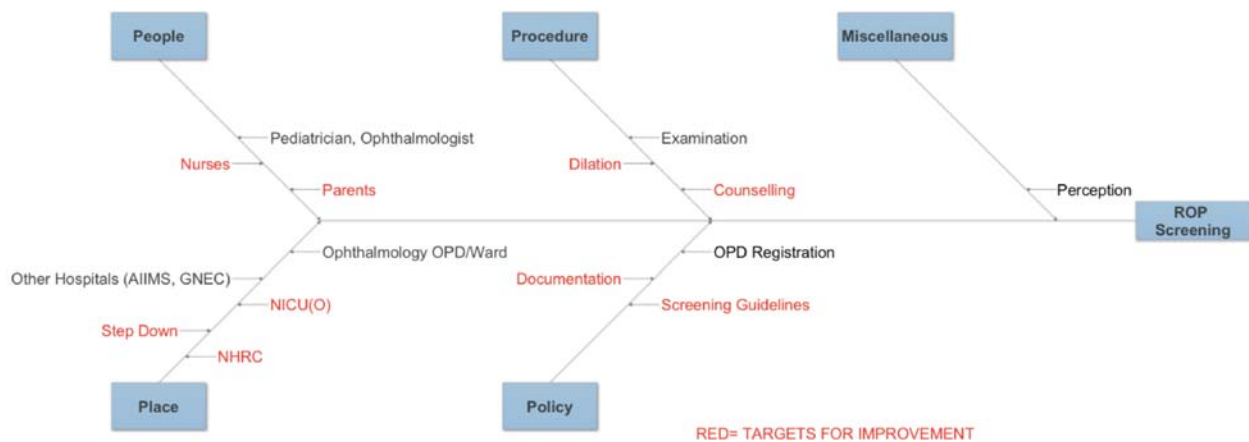


PROCESS MAPPING

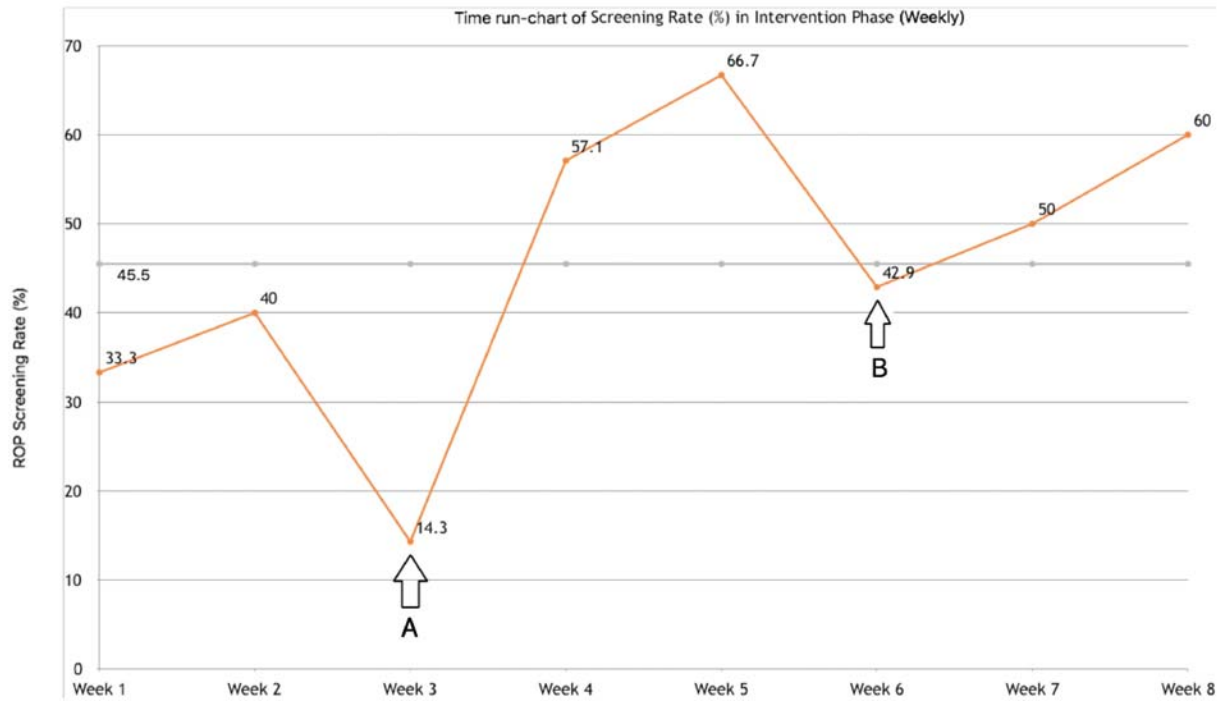


WEB FIG. 1 Process mapping of the quality improvement project for improving screening for retinopathy of prematurity.



FISH BONE ANALYSIS

WEB FIG. 2 Fish bone analysis of the quality improvement project for improving screening for retinopathy of prematurity.



WEB FIG. 3 Effect of training of nursing staff and counselling of parents on screening rate of retinopathy of prematurity. The two dips in screening rate were handled by change in place of counselling (A) and assigning a ROP nurse (B).

WEB TABLE I NURSES PROVIDING CORRECT RESPONSE (*N*=40).

<i>Question</i>	<i>Pre-intervention phases (%)</i>	<i>Post-intervention phases (%)</i>
Recommended level of Oxygen Saturation in Neonates	13 (32.5)	36 (90.0)
ROP affects which organ	35 (87.5)	40 (100.0)
Birth Weight criteria for ROP screening	27 (67.5)	39 (97.5)
Gestational age criteria for ROP screening	10 (25.0)	39 (97.5)
Risk factor For ROP	23 (57.5)	39 (97.5)
Follow-up of ROP screening done at what gestational age	23 (57.5)	40 (100.0)
Treatment of ROP done by	36 (90.0)	40 (100.0)
Treatment modality of choice for ROP	17 (42.5)	40 (100.0)

ROP: Retinopathy of prematurity.

WEB TABLE II PARENTS PROVIDING POSITIVE RESPONSE

<i>Question</i>	<i>Pre-intervention phase (N=42) n (%)</i>	<i>Post intervention phase (N=47) n (%)</i>
Knowledge received about risks in preterm baby	3 (7.1)	39 (83.0)
Counselling received regarding care of preterm baby	6 (14.3)	47 (100.0)
Counselling regarding ROP	1 (2.4)	37 (78.7)
Counselling regarding risk to vision	1 (2.4)	40 (85.1)
Advised to get ROP screening	2 (4.8)	40 (85.1)

ROP: Retinopathy of prematurity.