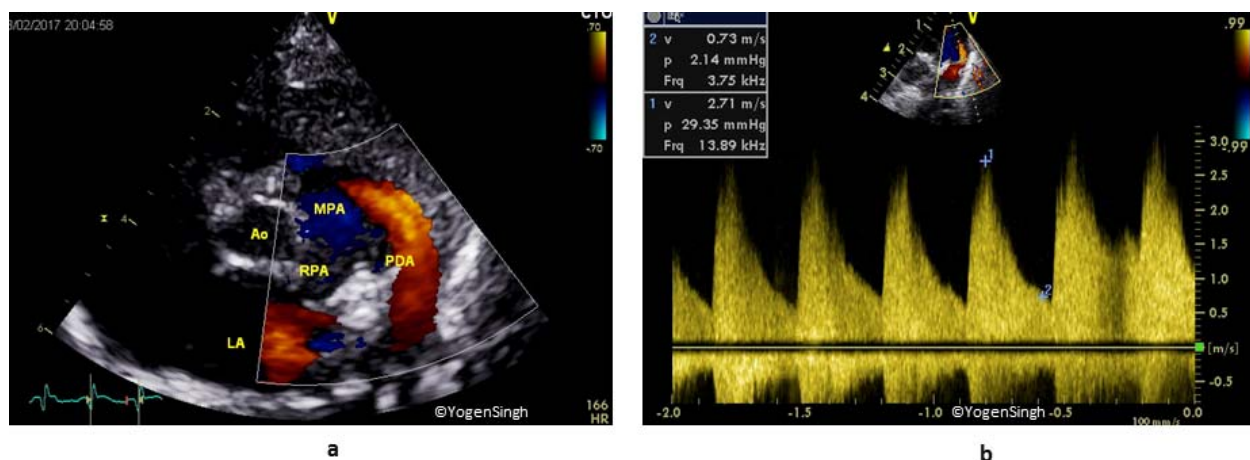
**a: TR jet on A4C****b: TR Doppler**

**WEB FIG. 1** Quantitative assessment of pulmonary artery systolic pressure (PASP) by measuring tricuspid valve regurgitation velocity (TR jet): (a) TR jet on colour flow mapping (CFM) in apical 4-chamber view (A4C); (b) TR Doppler reflecting gradient between right ventricle and right atrium.

**a****b****c****d**

**WEB FIG. 2** Echocardiographic diagnosis of patent ductus arteriosus (PDA): (a) PDA on colour flow mapping (CFM); (b) with pulsatile Doppler in high left parasternal short axis view; (c) volume overloading of the left side of the heart in apical 4-chamber view; and (d) left atrium to aorta (LA/Ao ratio) in parasternal long axis view.