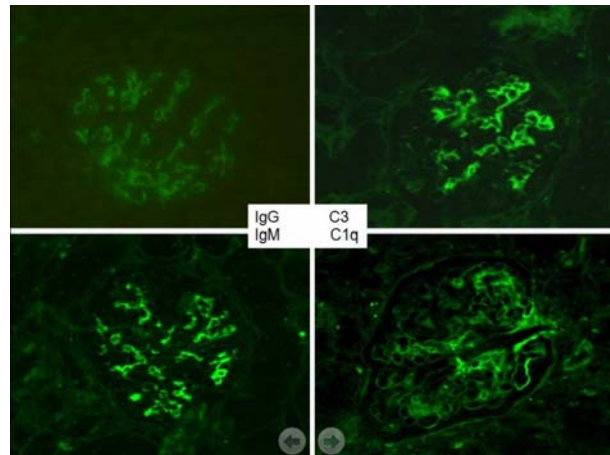
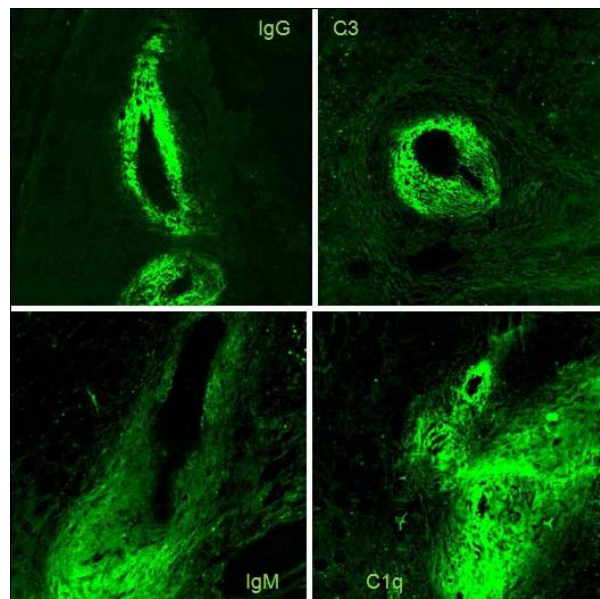


WEB FIG. 1 (a) Kidneys were blotchy in surface and cut section showed discoloration and small infarcts (arrow); (b) Photomicrograph shows early infarct (marked); (c) and (d) glomeruli only showed mesangial proliferation (H&E –b,c, PAS –d, original magnification b-x10, c&d-40).



WEB FIG. 2 Immunofluorescence of kidneys showed mesangial staining with immunoglobulins (IgG and IgM) and complements (C3 and C1q) (FITC, X40).



WEB FIG. 3 Immunofluorescence of kidneys showed arteries staining with immunoglobulins (IgG and IgM) and complements (C3 and C1q), both in areas with and without arteritis (FITC, X40).