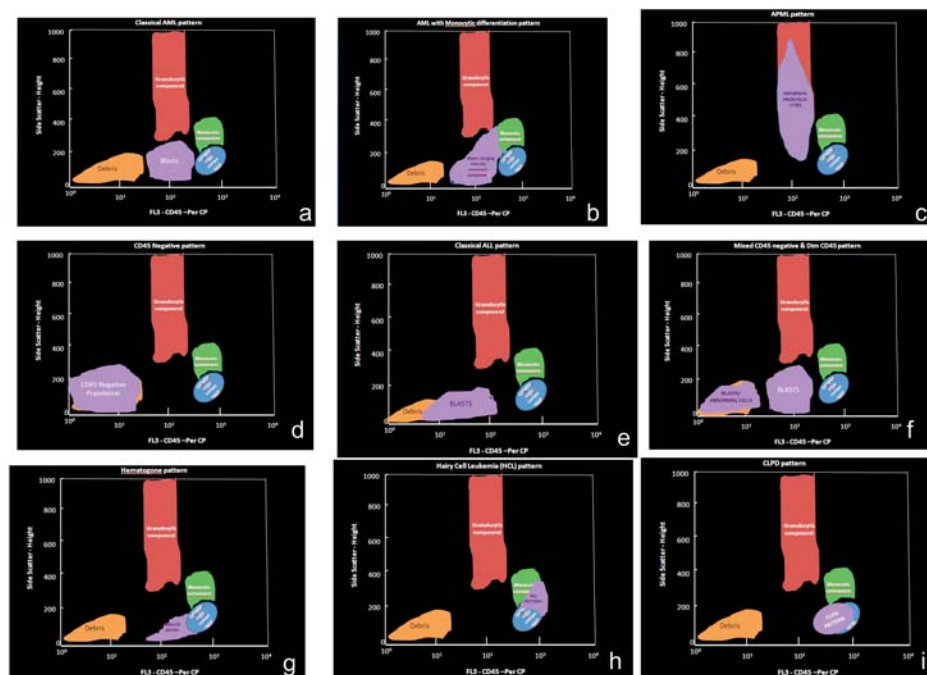
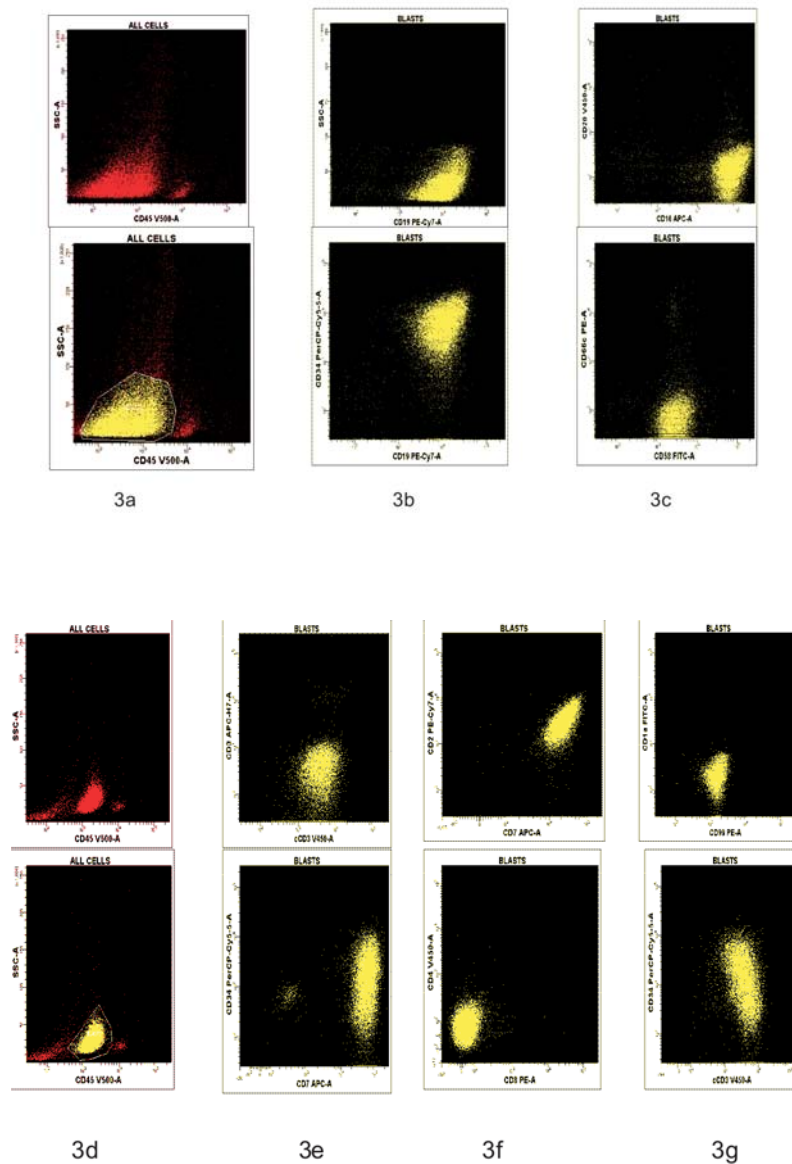


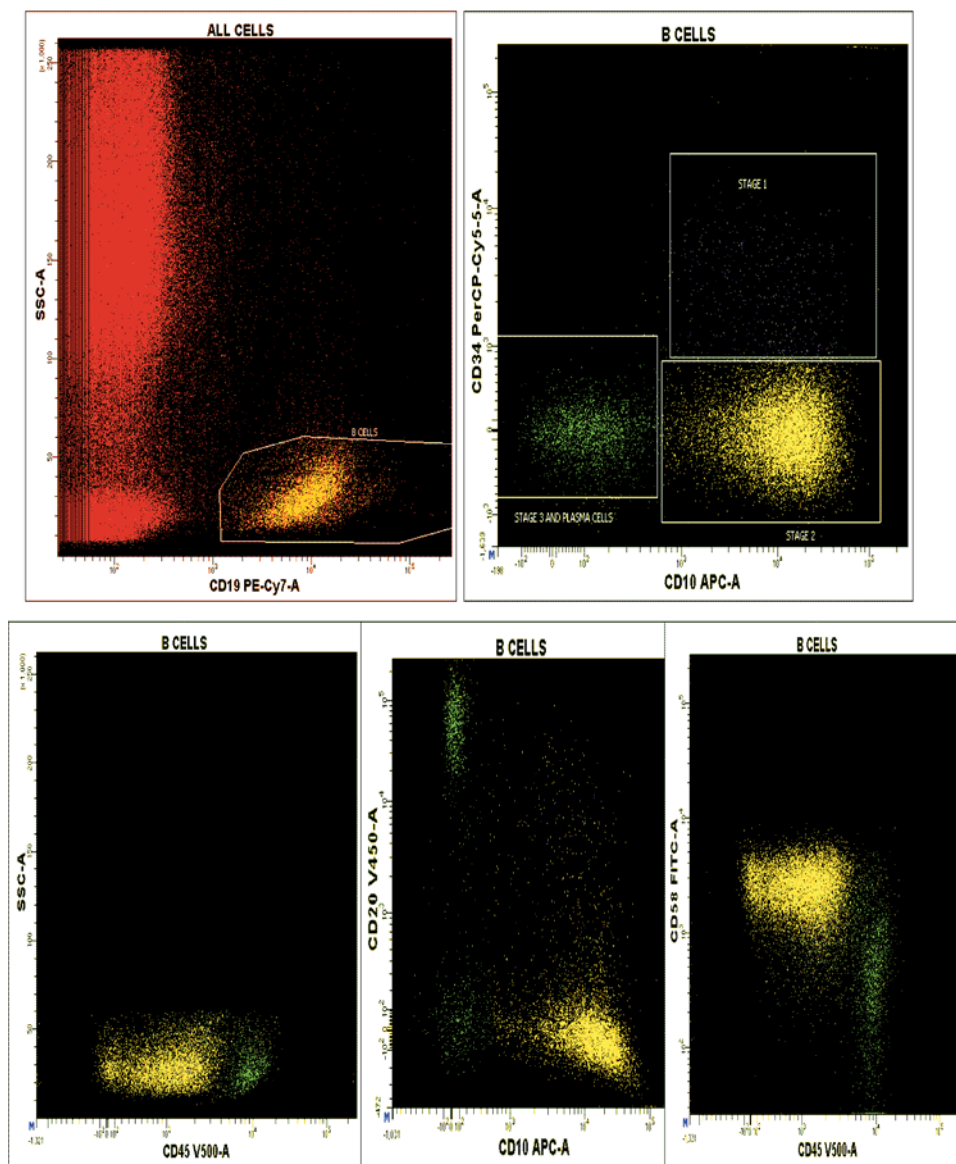
WEB FIG. 1 Show typical phenotypic patterns of hematogones; a: shows CD19 based gating strategy; b: Shows sub gating based on CD34 and CD10; c: Shows classical waterfall pattern; d: shows the merging pattern on CD45/SS; e: CD58vsCD45, showing maturation pattern.



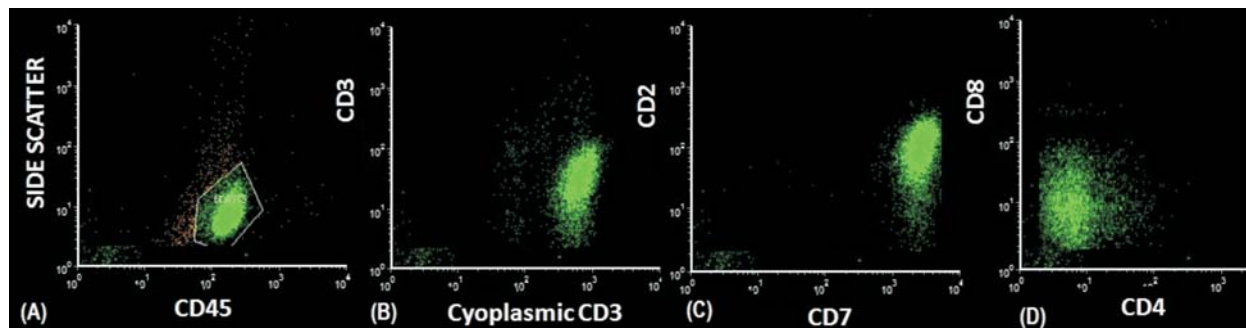
WEB FIG. 2 Location of blasts and/or abnormal cells.



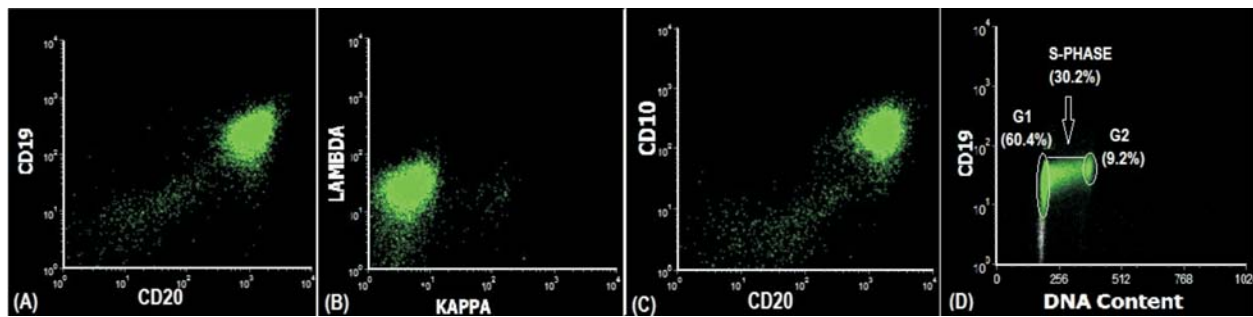
Web Fig. 3 (a-c) Patterns in Precursor B cell ALL, (d-g): Patterns of Precursor T cell ALL.



WEB FIG. 4 Minimal residual disease patterns in Precursor B Cell ALL.



Web Fig. 5 (A) Cells expressing CD45, suggestive of blasts (B) Blasts express cytoplasmic CD3 with dim to negative surface CD3, suggesting T cell Lymphoblastic Lymphoma (C&D) T blasts express very bright CD7 and dim CD2, and are negative for CD4 and CD8.



WEB FIG. 6 Cells expressing CD19, CD20 show lambda restriction, suggestive of B cell Non Hodgkins lymphoma (C) Lambda restricted B cells show CD10, consistent with CD10 Positive B cell Lymphoma (D) High S-phase fraction on lambda restricted B cells, suggesting Burkitts Lymphoma.