

**The Accuracy of Tactile Assessment of Fever in Children by Caregivers:
A Systematic Review and Meta-analysis**

YAN-WEI LI, LE-SHAN ZHOU AND XING LI

*From Nursing department, Tongji Hospital, Tongji Medical College, Huazhong University of Science
and Technology, Wuhan, China*

*Correspondence to: Le-Shan Zhou, Professor, Xiangya Nursing School, Central South University, No
172, Tongzipo Road, Yuelu District, Changsha City, 410013, China.*

Email: leshanzhou@csu.edu.cn

PII: S097475591600044

ABSTRACT

Context: Fever is the most common complaint in the pediatric and emergency departments. Caregivers prefer to detect fever in their children by tactile assessment.

Objective: The purpose of this systematic review was to summarize the evidence on the accuracy of caregivers' tactile assessment for detecting fever in children.

Evidence-acquisition: We performed a literature search of Cochrane Library, Pub Med, Web of Knowledge, EMBASE (ovid), EBSCO and Google Scholar, without restriction of publication date, to identify English articles assessing caregivers' ability of detecting fever in children by tactile assessment. Quality assessment was based on the 2011 Quality Assessment of Diagnostic Accuracy Studies (QUADAS-2) criteria. Pooled estimates of sensitivity and specificity were calculated with use of bivariate model and summary receiver operation characteristics plots for meta-analysis.

Results: 11 articles were included in our analysis. The summary estimates for tactile assessment as a diagnostic tool revealed a sensitivity of 87.5% (95% confidence interval (CI): 79.3% to 92.8%) and specificity of 54.6% (95%CI, 38.5% to 69.9%). The pooled positive likelihood ratio was 1.93 (95%CI, 1.39 to 2.67) and negative likelihood ratio was 0.23 (95%CI, 0.15 to 0.36). Area under curve was 0.82 (95%CI: 0.7 to 0.85). The pooled diagnostic odds ratio was 8.46 (95%CI, 4.54 to 15.76).

Conclusion: Tactile assessment of fever in children by palpation has moderate diagnostic value. Caregivers' assessment as "no fever" by touch is quite accurate in ruling out fever, while assessment as "fever" can be considered but needs confirmation

Keywords: *Assessment, Measurement, Parents and Pyrexia.*

Fever is the most common complaint in the pediatric out-patient and emergency departments, accounting for almost one third of these visits [1,2]. Fever is a vital symptom for diagnosis. In a child, many infections disease either single or in combination could present with fever [3]. Although thermometers are readily available at home, parents still prefer to detect fever by touch. A study from New York revealed that although 78% parents owned a thermometer at home, 48% still used palpation as the usual method to detect fever, and up to 87% of parents used palpation at least occasionally [4],

similar to that reported by other authors [5,6]. It is a fact that tactile assessment of fever by palpation is universal due to its convenience.

The initial diagnosis of fever in a child is based almost entirely on the assessment by the caregivers [7]. The ability of caregivers to detect fever accurately in children by tactile examination is critical in preventing a first stage delay in the management of childhood illnesses [8]. The World Health Organization and United Nations Children's Fund assume that mothers are able to assess their children by palpation for the presence of fever [9]. However, it is controversial about whether caregivers have the ability to accurately evaluate their children's body temperature. Some studies suggest that there are significant inaccuracies in tactile assessment of body temperature, and objective measurement of temperature is recommended [8-10]. While findings in other studies showed that caregivers were able to provide accurate information about the presence or absence of fever in their children by palpation without the use of a thermometer [11-13]. Therefore, tactile assessment could be accept as a reliable screening tool for fever determination, and caregivers' description of their children's history of fever should be considered when giving medical decisions [11-13].

Teng, *et.al.* [10] conducted a systematic review in 2007 about the accuracy of mother's touch to detect fever in children. Many new studies have since been published in the topic. We, therefore, updated the systematic review on the accuracy of palpation by caregiver to detect fever.

METHODS

This systematic review was conducted according to the guidance of the Preferred Reporting Items for Systematic Review and Meta Analyses (PRISMA) Statement [14].

Search Strategy

We searched the databases of Cochrane Library, Pub Med, Web of knowledge, EMBASE (Ovid), EBSCO and Google Scholar for diagnostic studies in English comparing tactile assessment of fever with objective method using a thermometer, without date restrictions. We used the following search terms: child or children, fever or febrile, palpate or palpation or touch or tactile or subjective assesment. Hand-search was performed after screening the reference lists of the retrived articles for pertinent publications. Abstracts were reviewed and full-text articles were obtained for those studies that met the eligibility criteria.

Study Selection

Inclusion Criteria: (a) published original papers in English; (b) evaluated the accuracy of palpation by parents as a method of detecting fever in children, compared with thermometer measurement; and (c) provided detailed information on the sensitivity, specificity, positive predictive value (PPV) and negative predictive value (NPV) of tactile assessment. We contacted the corresponding authors to obtain missing information when necessary.

Exclusion Criteria: (a) tactile assessment was not done during the study, which means tactile assessment was done in a different time and could not be compared against thermometer measurement at the same time; (b) publication with only title and abstract, and full text could not be obtained after contacting the corresponding authors twice; (c) duplications, letters and reviews.

Data were extracted independently through a standardized protocol by two reviewers. Disagreements between the extractors were recorded and resolved by consultation with a third author. We recorded characteristics of the study (author, design, year of publication, study country, and setting), study population (sample size, age range, inclusion and exclusion criteria, and prevalence of fever), reference standard (axillary temperature or rectal temperature or others, diagnostic cut-off), and index tests (definition, procedures, and link with inclusion criteria) on predefined forms. The diagnostic performance measure for index tests: sensitivity, specificity, positive predictive value (PPV), negative predictive value (NPV), positive likelihood ratio (+LR), negative likelihood ratio (-LR) were also collected.

Quality assessment: We assessed the quality of selected studies and potential risk of bias with the 2011 revised version of the Quality Assessment of Diagnostic Accuracy Studies (QUADAS-2), adapted to the review diagnostic accuracy studies, as recommended by the Cochrane Collaboration. This tool is composed of four domains that consider patient selection, index test, reference standard and flow of patients through the study, and timing of the index tests [15]. The quality assessment was done independently by two authors. Any disagreement was resolved through discussion and consensus.

Data Synthesis and Analysis: Statistical analysis was performed using STATA software version 12.0 (Stata Corporation, College Station, Texas, USA). Bivariate binomial mixed model was chosen and computed using the Midas program, as recommended by the Cochrane Collaboration for meta-analysis of diagnostic accuracy studies [16]. Meta-analytic integration of appointed studies was

used for pooled estimated sensitivity, pooled estimated specificity, positive likelihood ratio, negative likelihood ratio, diagnostic odds ratio and variations (Chi-square, I-square, LRT p) for heterogeneity assessment. A summary receiver operating characteristic (SROC) curve was drawn to identify diagnostic performance of tactile assessment from the area under the curve (AUC). Publication bias was explored using Egger's test and Funnel plots.

RESULTS

The study selection process is displayed in **Fig. 1**. Eleven full-text articles [4,10,13, 17-24] were included in the quantitative study and underwent quality assessment using QUADAS-2(<http://www.bristol.ac.uk/social-community-medicine/projects/quadas/quadas-2/>). **Table I** summaries the characteristics of the chosen studies. The 11 included studies were conducted in various countries/regions in the world and included a total of 3,625 children. Major variations in sensitivity, specificity, positive predictive value, negative predictive value existed in these studies (**Web Table I**).

Quality assessment: Risk of bias and applicability of the included studies are displayed in **Web Table II**. Overall the 11 studies were rated with an average acceptable applicability. The majority of the included studies were at low risk for two categories with respect to applicability, including the patient and index test. Most studies used convenience samples, leading to high risk of bias in the patient section domain.

Meta-analysis: The pooled sensitivity of tactile assessment as a method of detecting fever was 87.5% (95% CI: 79.3%-92.8%) and the pooled specificity was 54.6% (95% CI: 38.5%-69.9%). The pooled diagnostic odds ratio was 8.46 (95%CI, 4.54 - 15.76). Significant heterogeneity was found among studies ($P < 0.001$, $I^2 = 99.3$).

Forest plot for sensitivity and specificity of tactile assessment is showed in **Fig. 2**. The funnel plot and the test indicates no publication bias ($P = 0.11$) (**Web Table 1**).

The SROC curve of sensitivity vs. specificity of tactile assessment suggests diagnostic cut-off located in the point where sensitivity was 0.88 and specificity 0.55. It also indicates that there was no threshold effect. Area under curve was 0.82 (95%CI: 0.7 to 0.85), predicting moderate diagnostic value (**Fig. 3**). When looking at the likelihood ratios (measures that are more meaningful for clinical

decisions), pooled estimates of positive likelihood ratio were 1.93 (95% CI, 1.39-2.67), and pooled estimates of negative likelihood ratio were 0.23 (95% CI, 0.15-0.36).

DISCUSSION

Our systematic review and meta-analysis found that tactile assessment of fever by caregiver in children had moderate diagnostic value. The reasonably high sensitivity and low negative likelihood ratio indicated that caregivers' assessment of 'no fever' were quite accurate. When a child had no fever, the caregiver can perhaps accurately judge it by palpation. On the other hand, the specificity and the positive likelihood ratio were not good enough, meaning thereby that caregivers' assessment of 'fever' was not that reliable and confirmation was needed. Tactile assessment was therefore more useful to exclude fever rather than to confirm fever.

There are some limitations of our review. First, six potentially relevant articles could not be included because of missing needed information [25-30]. In the abstract of four of these studies, it was stated that caregivers' assessment of fever was reliable [25-27,30] with relatively high sensitivity. Abstracts of the other two articles could not be found [28,29]. Second, the quality of the results was moderate to low. Lastly, there was significant heterogeneity among the chosen studies for the meta-analysis, although bivariate binomial mixed model allowing for heterogeneity was used in our analysis [31]. Still, the heterogeneity could not be eliminated through statistical methods. The heterogeneity was supposed to be caused by the significant differences in educational background, severity of pyrexia, age of child, methods of temperature taking, fever threshold and research design in the chosen studies.

The results in our study were similar to the findings of a previous systematic review [10]. The diagnostic odds ratio was different from that of the earlier review, but the 95% confidence level was still above one. We added area under curve to indicate diagnostic value, which is more convincing when the diagnostic cut-off is different. The overall methodology in our study was improved.

As a subjective method, tactile assessment of fever had not reached a uniform standard so far. There were only few studies exploring the effect of different palpation method (site used, part of hand used) on reliability of tactile assessment. Odinaka's study [17] revealed that palpation with the palmer surface of the hand using multiple sites improves the reliability of tactile assessment of fever. Since detecting fever by touch has some value for reference, we can explore some techniques to improve the reliability of this method and carry out relevant education to caregivers.

Contributors: YWL: conceptualized and designed the study, carried out the analyses, interpreted the data, drafted the initial manuscript, and approved the final manuscript as submitted; LSZ: conceptualized and designed the study, assisted in the interpretation of the results, revised the manuscript, and approved the final manuscript as submitted; XL: assisted in data extraction and the interpretation of the results, and approved the final manuscript as submitted.

Funding: None; *Competing interest:* None stated.

REFERENCES

1. Wallenstein MB, Schroeder AR, Hole MK, Ryan C, Fijalkowski N, Alvarez E, *et al.* Fever literacy and fever phobia. *Clin Pediatr.* 2013;52:254-9.
2. Dai YT, Lu SH. What's missing for evidence-based fever management? Is fever beneficial or harmful to humans? *Int J Nurs Stud.* 2012;49:505-7.
3. Behrman RE, Kliegman RM, Jenson HB. *Nelson Textbook of Paediatrics.* 16 Edition, WB Saunders Company, New York; 2000. p. 2-3.
4. Katz-Sidlow RJ, Rowberry JP, H M. Fever determination in young infants: prevalence and accuracy of parental palpation. *Pediatr Emerg Care.* 2009;25:12-4.
5. Polat M, Kara S, Tezer H, Tapısız A, Derinöz O, Dolgun A. A current analysis of caregivers' approaches to fever and antipyretic usage. *J Infect Dev Ctries.* 2014;8:365-71.
6. Zyoud SH, Al-Jabi SW, Sweileh WM, Nabulsi MM, Tubaila MF, Awang R, *et al.* Beliefs and practices regarding childhood fever among parents: A cross-sectional study from Palestine. *BMC Pediatr.* 2013;13:1-8.
7. Einterz EM, Bates ME. Fever in Africa: Do patients know when they are hot? *Lancet.* 1997;350:781.
8. Asekun-Olarinmoye EO, Egbewale BE, Olajide FO. Subjective assessment of childhood fever by mothers utilizing primary health care facilities in Osogbo, Osun State, Nigeria. *Niger J Clin Pract.* 2009;12:434-8.
9. Wammanda RD, Onazi SO. Ability of mothers to assess the presence of fever in their children: Implication for the treatment of fever under the IMCI guidelines. *Ann Afr Med.* 2009;8:173-6.
10. Teng CL, Ng CJ, Nik-Sherina H, Zailinawati AH, Tong SF. The accuracy of mother's touch to detect fever in children: A systematic review. *J Trop Pediatrics.* 2007;54:70-3.

11. Oyakhirome S, Profanter K, Kremsner PG. Assessment of fever in African children: implication for malaria trials. *Am Soc Trop Med Hyg.* 2010;82:215-8.
12. Jawad J, Faisal B, Shafique M, Ghafoor T. Maternal perception of fever in children by tactile technique, How valid it is? *Pak Armed Forces Med J.* 2014;64:488-92.
13. Abdulkadir MB, Johnson WB, Ibraheem RM. Validity and accuracy of maternal tactile assessment for fever in under-five children in north central Nigeria: a cross-sectional study. *BMJ Open.* 2014;4:e005776.
14. Moher D, Liberati A, Tetzlaff J, Altman D, Group P. Preferred reporting items for systematic reviews and meta-analyses: the PRISMA statement. *Ann Intern Med.* 2009; 151:264-9.
15. Whiting PF, Rutjes AW, Westwood ME, Mallett S, Deeks JJ, Reitsma JB, *et al.* QUADAS-2: a revised tool for the quality assessment of diagnostic accuracy studies. *Ann Intern Med.* 2011;155:529-36.
16. Macaskill P, Gatsonis C, Deeks J, Harbord R, Takwoingi Y. Chapter 10: Analysing and Presenting Results. *In: Deeks JJ, Bossuyt PM, Gatsonis C (eds). Cochrane handbook for systematic reviews of diagnostic test accuracy version 1.0, The Cochrane Collaboration. 2010. Available from://srdata.cochrane.org. Accessed January 6,2014.*
17. Odinaka KK, Edelu BO, Nwolisa EC. Accuracy of subjective assessment of fever by Nigerian mothers in under-5 children. *Niger Med J.* 2014;55:338-41.
18. Hooker EA, Smith SW, Miles T, King L. Subjective assessment of fever by parents: comparison with measurement by noncontact tympanic thermometer and calibrated rectal glass mercury thermometer. *Ann Emerg Med.* 1996;28:313-7.
19. Nwanyanwu OC, Ziba C, Redd SC, Luby SP. Palpation as a method of fever determination in Malawian children who are less than 5 years old: how reliable is it? *Ann Trop Med Parasit.* 1997;91:359-63.
20. Whybrew K, Murray M, Morley C. Diagnosing fever by touch: observational study. *BMJ.* 1998;317:321-30.
21. Alves J, Correia JD. Ability of mothers to assess the presence of fever in their children without using a thermometer. *Trop Doct.* 2002;32:145-6.
22. Callanan, D. Detecting fever in young infants: Reliability of perceived, pacifier, and temporal artery temperatures in infants younger than 3 months of age. *Pediatr Emerg Care.* 2003;19:240-3.

23. Chaturvedi D, Vilhekar KY, Chaturvedi P, Bharambe MS. Reliability of perception of fever by touch. *Indian J Pediatr.* 2003;70:871-3.
24. Akinbami FO, Orimadegun AE, Tongo OO, Okafor OO, Akinyinka OO. Detection of fever in children emergency care: Comparisons of tactile and rectal temperatures in Nigerian children. *BMC Res Notes.* 2010;3:108.
25. Banco L, Veltri D. Ability of mothers to subjectively assess the presence of fever in their children. *AM J Dis Child.* 1984;138:976-8.
26. Ernst TN, Philp M. Temperature assessment by parental palpation. *AM J Dis Child.* 1985;139:546-7.
27. Singhi S, Sood V. Reliability of subjective assessment of fever by mothers. *Indian Pediatr.* 1990;27:811-5.
28. Ford H, Hoffman BD. How good is the hand?: What is the value of tactile fever perception among children's caregivers? *Pediatr Res.* 2004;55S:238-9.
29. Ozuah PO. Feeling the heat: Subjective assessment of fever by parents. *Pediatr Res.* 2001;49:131.
30. Al-Almaie SM. The reliability of mothers to assess the presence of fever in their children. *Saudi Med J.* 1999;20:696-8.
31. Rambaud-Althaus C, Althaus F, Genton B, D'Acremont V. Clinical features for diagnosis of pneumonia in children younger than 5 years: A systematic review and meta-analysis. *Lancet Infect Dis.* 2015;15:439-50.

TABLE I CHARACTERISTICS OF INCLUDED DIAGNOSTIC STUDIES

<i>Setting</i>		<i>Sampe size</i>	<i>Age range</i>	<i>Prevalence of fever(%)</i>	<i>Inclusion criteria</i>	<i>Reference standard</i>		<i>Index texts</i>	<i>Study outcome</i>
						<i>methods</i>	<i>Fever threshold</i>		
Abdulkadir <i>et al.</i> (2014) [13]	Nigeria; pediatric emergency department	409	≤5 years	84.6	Children with fever as part of complaint	U-mec digital thermometer	Rectal temperature ≥38.0°C	Touching site not mentioned	Tactile assessment is not reliable.
Odinaka <i>et al.</i> (2014) [17]	Nigeria; children outpatient Clinic and emergency room	113	≤5 years	45.1	Not mentioned	mercury in glass thermometer; 5min	Axillary temperature ≥37.5°C	Touching of forehead (30.1%)	Tactile assessment is a sensitive screening method. Palpation with the palmer surface of the hand using multiple sites improves the reliability of tactile assessment of fever
Akinbami <i>et al.</i> (2010) [24]	Nigeria; pediatric emergency department	182	6 to 59 months	61.5	Not mentioned	rectal mercury-in-glass thermometer; 4min	Rectal temperature ≥38°C	Touching site not mentioned	Tactile assessment may over estimate the prevalence of fever, but rarely miss fever, and children who do not feel hot by tactile perception may still have fever.

	nt								
Katz-Sidlow <i>et al.</i> (2009) [4]	USA;Pediatric emergency department	88	≤3months	24	children with any complaint	Rectal temperature thermometer(Dinamap Pro 400 V2 or IVAC Turbo Temp)	Rectal temperature ≥38°C	Mostly touching of forehead	Tactile assessment is unreliable. It may over estimate the prevalence of fever, but rarely miss fever.
Wammanda <i>et al.</i> (2009) [9]	Nigeria;pediatric outpatient department	126	2months to 5years	65.1	Children with fever as part of complaint	Mercy in glass thermometer	Axillary temperature ≥37.2°C	Touching of forehead	Tactile assessment is reliable.
Callanan <i>et al.</i> (2003) [22]	USA;pediatric hospital	179	≤3months	12.8	children with any complaint	Rectal thermometer(WelchAllyn, San Diego, CA)	Rectal Temperature ≥38°C	Touching site not mentioned	Tactile assessment is not reliable. It may over estimate the prevalence of fever.
Chaturvedi <i>et al.</i> (2003) [23]	India;pediatrics department	200	0-1year(100) and 6-12years(100)	34.0	Children with fever as part of complaint	Rectal thermometer for infants(0-1year) and oral thermometer	Rectal temperature ≥38°C;Oral temperature ≥37.5°C	Touching of body	The reliability of touch to assess body temperature needs to be critically assessed.

						for children(6-12 years)			
Alves et al(2002) [23]	Brazil;pediatric emergency department	169	2 months to 13 years	81.1	Children with fever as part of complaint	Axillary mercury thermometer; 2min	Axillary temperature $\geq 38.0^{\circ}\text{C}$	Touching of neck	Tactile assessment is reliable.
Whybrew et al (1998) [20]	Zambia;hospital	862	1month to 16years	27.3	Not mentioned	Mercury thermometer; 3 min	Axillary temperature $\geq 37.8^{\circ}\text{C}$	Touching of abdomen, forehead, and neck	Tactile assessment may over estimate the prevalence of fever, but rarely miss fever
Nwanyanwu et al(1997) [19]	Malawian ;outpatient's clinics	1120	<5years	36.7	children with any complaint	Not mentioned	Rectal temperature $\geq 38.0^{\circ}\text{C}$	Touching of forehead	Tactile assessment is not reliable.
Hooker et al(1996) [18]	USA;a tertiary care children' hospital	180	<5years	55.0	Not mentioned	Rectal glass mercury thermometer	Rectal temperature $\geq 38.0^{\circ}\text{C}$	Touching site not mentioned	Tactile assessment are not perfect at detecting fevers, but should not be ignored.

WEB TABLE I THE DIAGNOSTIC PARAMETERS OF TACTILE ASSESSMENT IN 11 ARTICLES

Studies	TP/n	FP/n	FN/n	TN/n	Sen/%	Spe/%	PLR	NLR	DOR
Abdulkadir et al(2014)	218	29	128	34	63.0	54.0	1.37	0.69	2.00
Odinaka et al(2014)	42	39	9	23	82.4	37.1	1.31	0.48	2.75
Akinbami et al(2010)	106	54	6	16	94.6	22.9	1.23	0.23	5.23
Katz-Sidlow et al(2009)	17	12	4	55	81	82	4.52	0.23	19.48
Wammanda et al(2009)	79	25	3	19	96.3	43.2	1.70	0.08	20.01
Callanan et al(2003)	21	33	2	123	91.3	78.8	4.32	0.11	39.14
Chaturvedi et al (2003)	48	75	20	54	70.5	40.9	1.21	0.70	1.73
Alves et al(2002)	104	3	33	29	75.9	90.6	8.10	0.27	30.46
Whybrew (1998)	221	353	15	273	93.6	43.6	1.66	0.15	11.39
Nwanyanwu et al(1997)	399	574	11	136	97.3	19.2	1.20	0.14	8.59
Hooker et al(1996)	81	19	18	62	81.8	76.5	3.49	0.24	14.68

Notes: TP: true positive; FP: false positive; TN: true negative; FN: false negative; Sen: sensitivity; Spe: specificity; PLR: positive likelihood ratio; NLR:negative likelihood ratio; DOR: diagnostic odds ratio; n: number of children;

WEB TABLE II BIAS AND APPLICABILITY: THE RELATIVE LEVEL BIAS ASSESSMENT OF BIAS RISK AND APPLICABILITY CONCERNS ACROSS THE INCLUDED STUDIES

<i>Study</i>	<i>RISK OF BIAS</i>				<i>APPLICABILITY CONCERNS</i>		
	<i>PATIENT SELECTION</i>	<i>INDEX TEST</i>	<i>REFERENCE STANDARD</i>	<i>FLOW AND TIMING</i>	<i>PATIENT SELECTION</i>	<i>INDEX TEST</i>	<i>REFERENCE STANDARD</i>
Abdulkadir et al (2014)	High	High	Low	Low	Low	High	Low
Odinaka et al(2014)	Low	Low	Low	Low	Low	Low	Low
Akinbami et al(2010)	High	Low	Low	Low	Low	High	Low
Katz-Sidlow et al(2009)	High	Low	High	Low	High	Low	Low
Wammanda et al(2009)	High	Low	High	Low	Low	Low	High
Callanan et al(2003)	High	High	High	Low	High	High	Low
Chaturvedi et al (2003)	High	Low	Low	Low	High	Low	High
Alves et al(2002)	Low	Low	Low	Low	Low	Low	High
Whybrew (1998)	High	Low	Low	Low	Low	Low	High
Nwanyanwu et al(1997)	Low	Low	High	Low	Low	Low	Low
Hooker et al(1996)	High	High	Low	Low	Low	High	Low

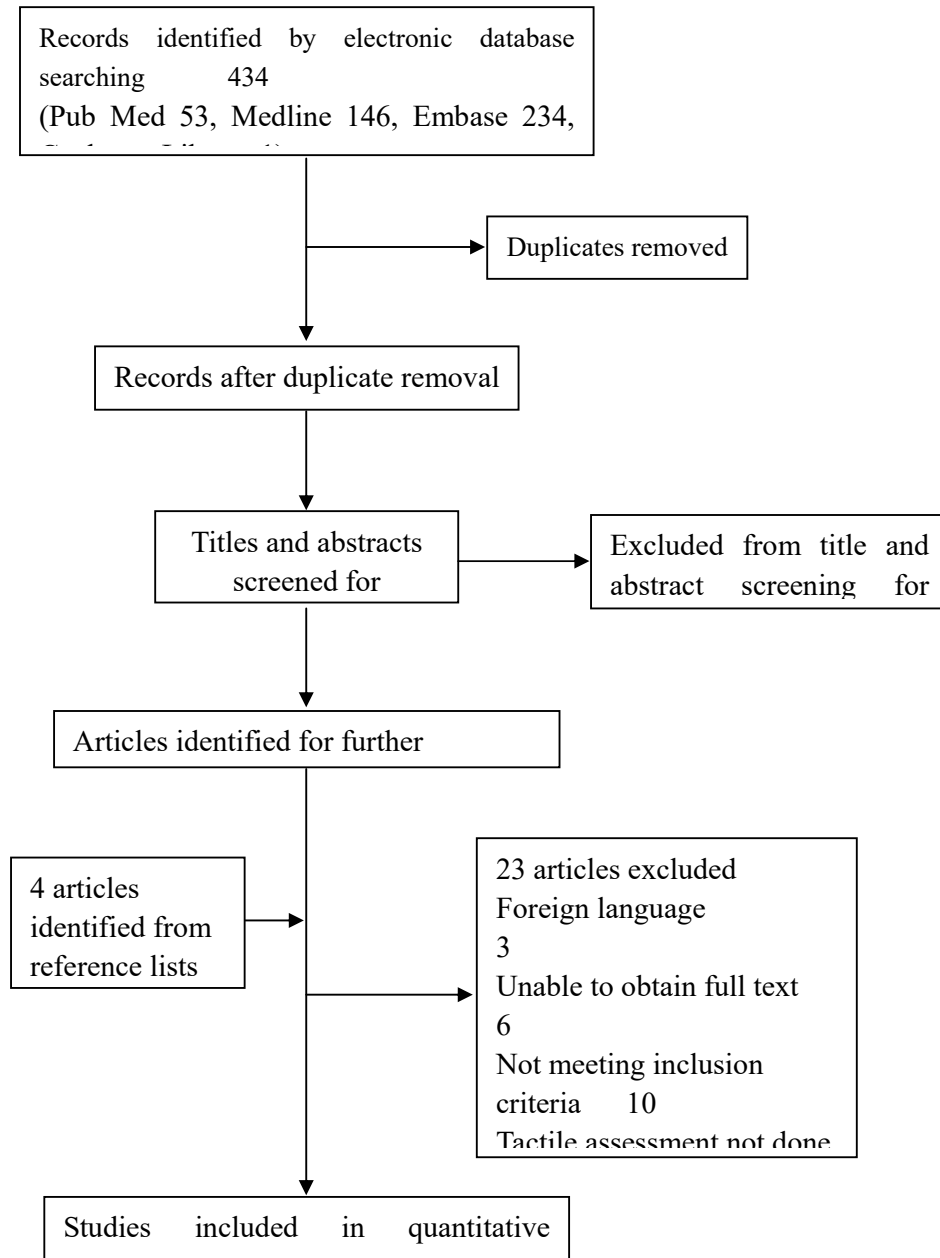


Fig. 1 Flow diagram of the study selection process.

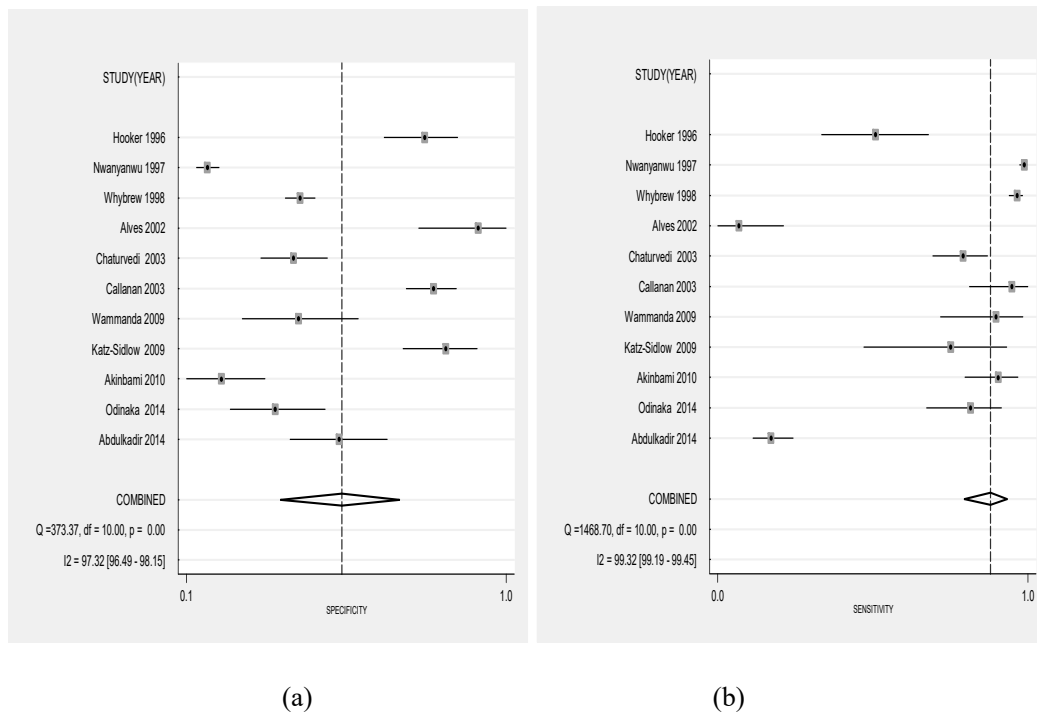


Fig. 2 Forest plot for sensitivity and specificity of tactile assessment.

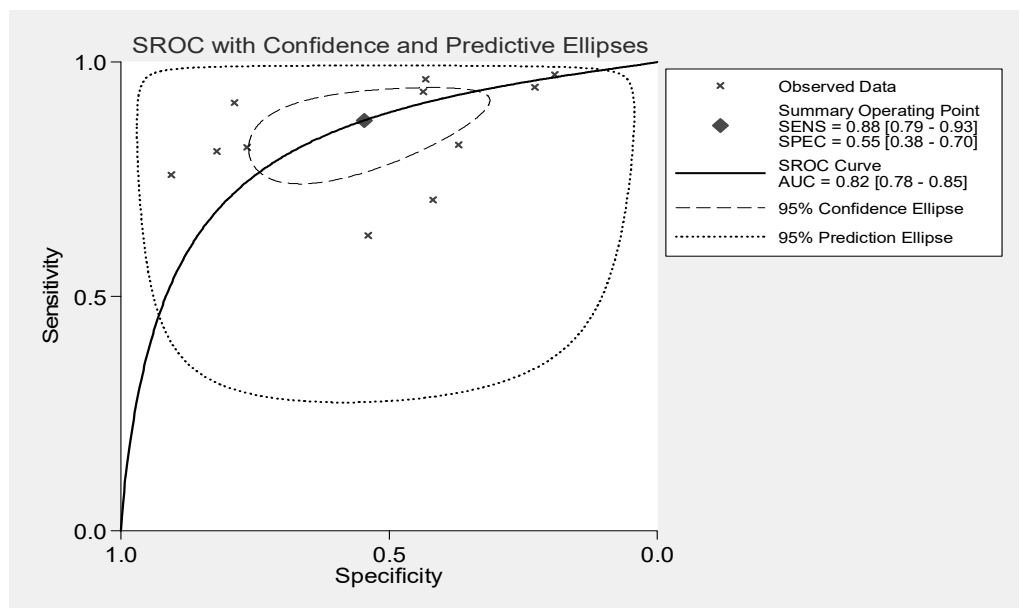
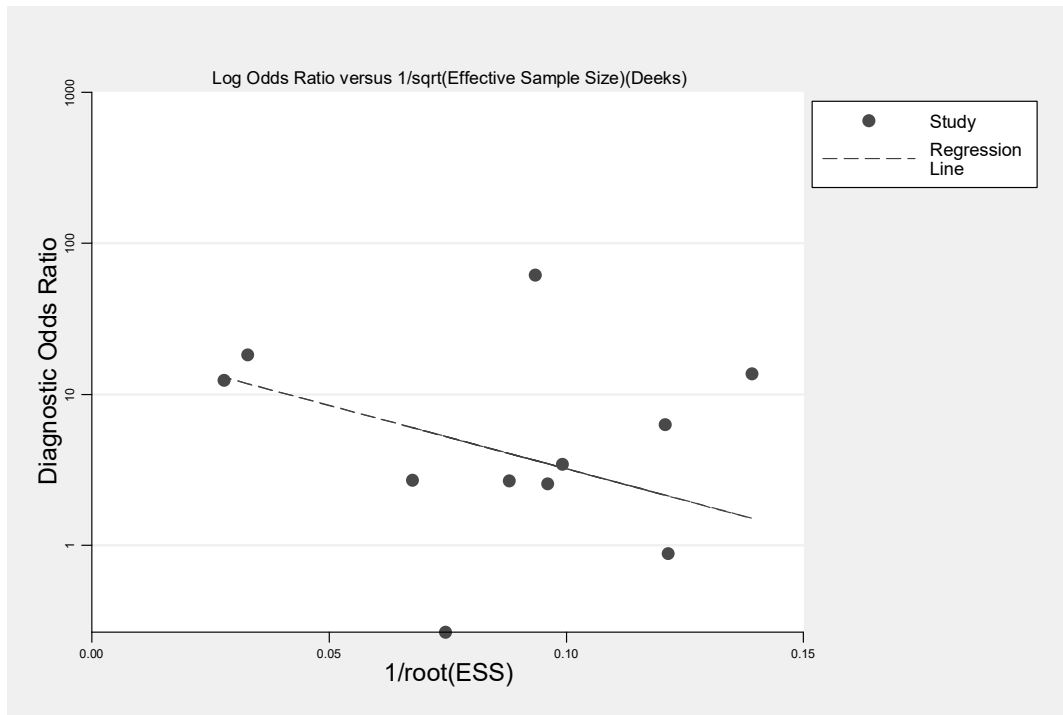


Fig 3 SROC curve of sensitivity versus specificity of tactile assessment.



Web Fig 1 Deek funnel plot.